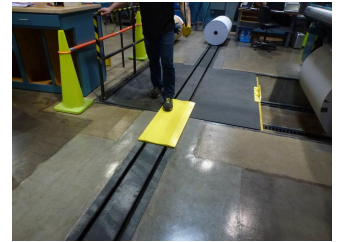


Technical Specification Sheet
TS-008-2015.0 HD Dolly

SMC Component: HD-Roll Dolly, 6-Wheel

Part Number: M3-00004-XX (Steel, Std. Offering)

Description: The SMC HD-Roll Dolly is fabricated using solid steel plate and rail materials to form a durable transport platform. The 2-rail gull wing design rides along the HD internal rails on 6 staggered 3" (75mm) heavy duty load runner wheels. The staggered wheels allow seamless transitions between adjacent HD tracks and other associated equipment within the roll load system. Flanges on the dolly wheels keep the load straight and in-line with the track center while the tapered gullwing dolly top secures the load yet allowing for easy transitions on-and-off the system.

Advantages Include: a) Dual-Rail steel fabrication allows for a stable platform for transport; b) Staggered HD wheels allow for an effortless transport between track sections and other elements of the HD system; c) Gull wing dolly top allows for ease in loading/unloading of product; d) Dolly base can be modified in OAL for your specific material load (shorter, or longer) while multiple dolly(s) for exceeding long loads are also optional.

Specifications: **Mechanical**

- 6500 Lb. (3000 kg) Load Rating
- 32" OAL (812mm) Standard Size – Other Sizes Available
- ASTM A36 Structural Steel Dolly Plate and Rail Material
- (6) 3" (75mm) HD Load Runners for Effortless Product Transport
- Gull Wing Design Keep Load Centered on Dolly Plate
- Weight: 115 Lb. (53 Kg.) Steel

Electrical

- No Requirements

Certifications: N/A

Options: OAL: 20", 40" (508mm, 1016mm)

Price: Please Contact SMC for Pricing.

SMC strives for accuracy in representing the product and specifications noted above. SMC reserves the right to deviate from specifications as needed to support specific applications or to correct for material and/or engineering changes.